

MAP REFERENCE
SHEET 27. SW. 5.28 6.529
C and d

ARQUES

RAILWAY FACILITIES FOR

SCALE 1/1000



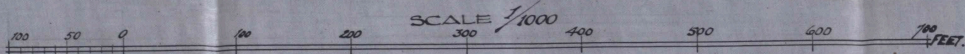
MAP REFERENCE
SHEET 27. SW. 5.28 & 5.29
C and d

ARQUES

RAILWAY FACILITIES FOR R.F.C.

PLAN REFERENCE

- EXISTING RAILWAY SHOWN THUS
- SIDINGS PREVIOUSLY LAID BY BRITISH
- NEW SIDINGS LAID BY 2642 RAILWAY CO. R.E.
- NEW FENCING FREQ. - DITD -
- NEW SURFACE DRAINS CUT - DITD -
- LEVEL CROSSINGS LAID BY - DITD - NUMBERED.
- 60° G.M. TRACK.



Almond
CAPT. M.C.R.E.
for O.C. 2642 RAILWAY CO. R.E.

264TH RAILWAY COMPANY, R.E.
208.
1. 10.18

REFERENCE :-
RAILWAY SHOWN THUS
ROADS
NEW TRACK LAID IN YARDS SHOWN THUS

CHEMIN - VERT - BRAY LOOP

- single line -
including
LOOP STATION and PLATEAU STN.

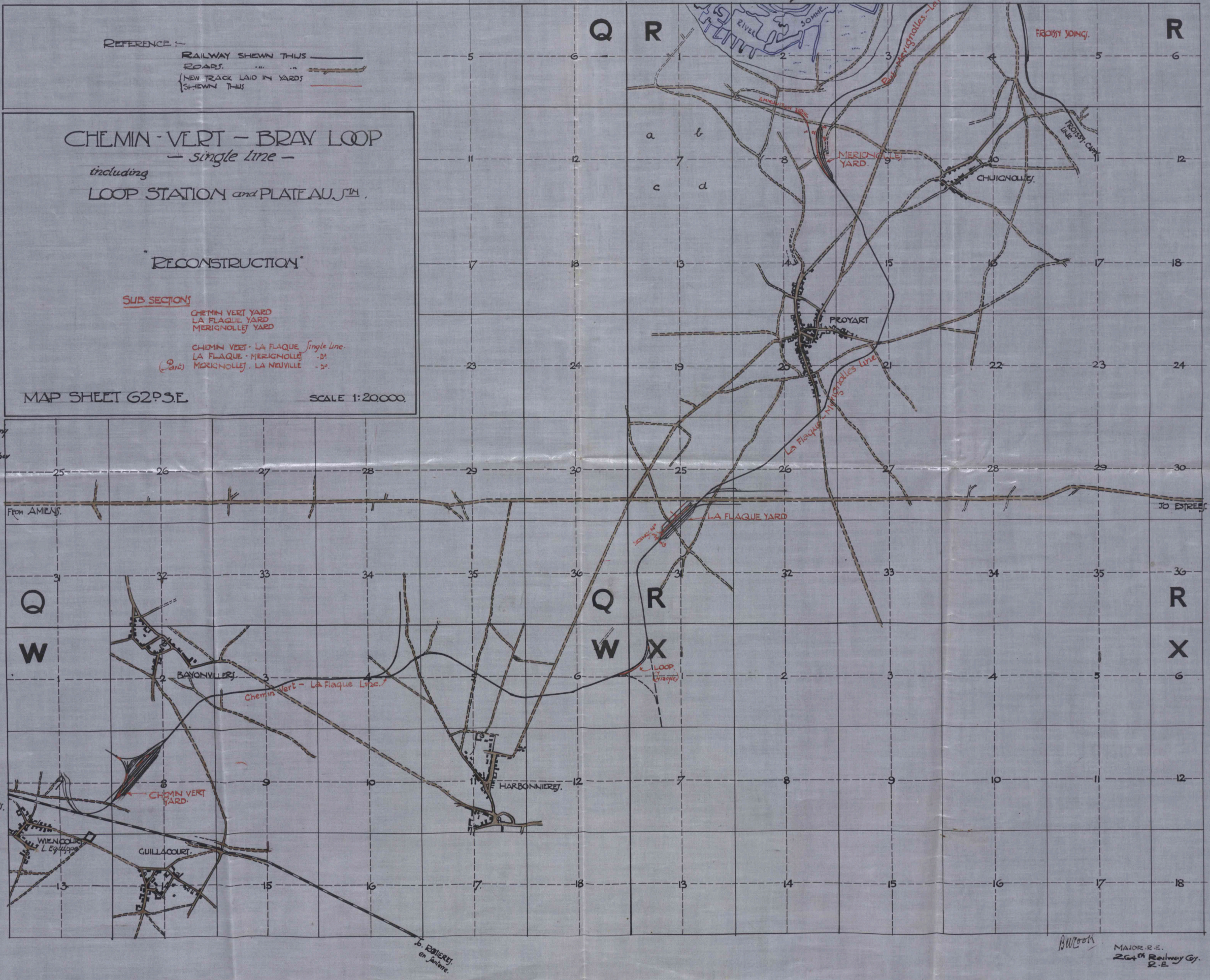
"RECONSTRUCTION"

SUB SECTIONS
CHEMIN VERT YARD
LA FLAQUE YARD
MERIGNOLLET YARD

CHEMIN VERT - LA FLAQUE single line.
LA FLAQUE - MERIGNOLLET - D.
MERIGNOLLET - LA NEUVILLE - D.

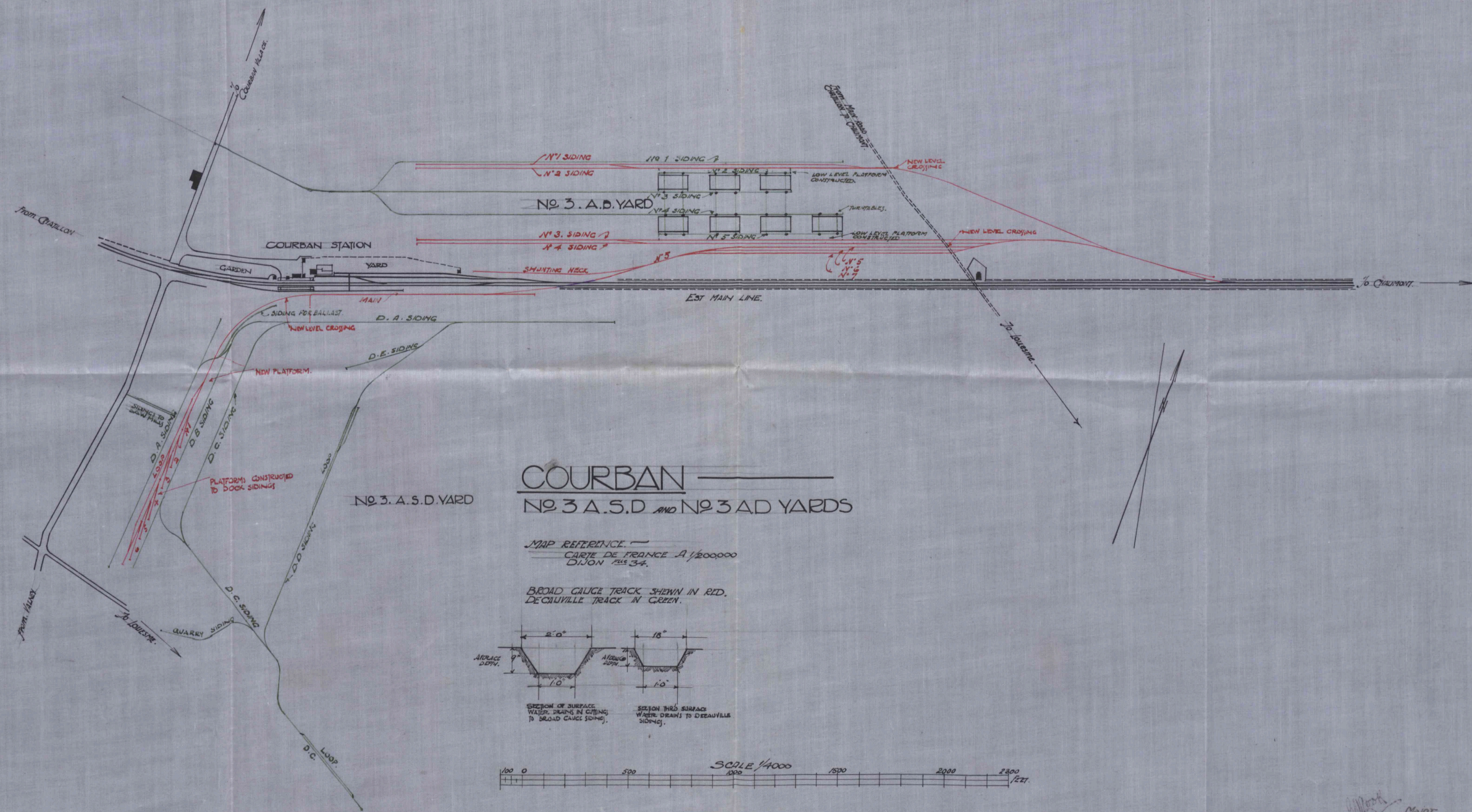
MAP SHEET G2P3E. SCALE 1:20,000.

9/11 an accompanying
War Diary for the
Month of September
1918.



BWoots
MAJOR R.E.
264th Railway Coy.
R.E.

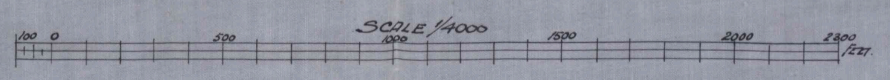
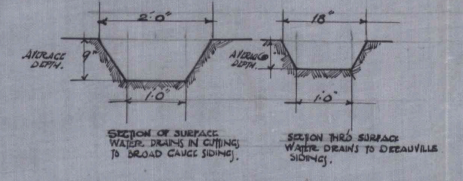
DRAWING 74



COURBAN
NO. 3 A.S.D. AND NO. 3 A.D. YARDS

MAP REFERENCE
 CARTE DE FRANCE A 1/200000
 DIJON 1883-4.

BROAD GAUGE TRACK SHOWN IN RED.
 DECAUVILLE TRACK IN GREEN.



MAINT
 R.E.
 O.C. 2649 RAILWAY CIVIL ENGR.
 C.E.

264th
RAILWAY COMPANY,
R.E.

209
1/10/18.

SHEET 62E-N.W.

SHEET 62D-N.E. *Scale. 1:20,000.*

CHEMN VERT - BRAY
LOOP *single line.*
including
LOOP STATION and PLATEAU
STATION.
"RECONSTRUCTION".

SUB SECTIONS.

- LA NEUVILLE SIDING
- BRAY TOURBIERE SIDING
- BRAY STATION AND SIDING
- LOOP STATION
- PLATEAU STATION
- MERIGNOLLE, LA NEUVILLE LINE (Part)
- LA NEUVILLE BRAY
- BRAY LOOP LINE.

REFERENCE -

- RAILWAY/ CHEMN THU. ———
- ROADS -D- -D-
- NEW TRACK LAID IN SIDING AND YARD: SHOWN THUS - - - -

*Plan accompanying War Diary
for the month of September 1918.*



SHEET 62D-N.E.

from Merignolle Stn.

FROISSY TRIANGLE

AW 2001

MAJOR. R.E.
O.C. 264th RAILWAY CO.
R.E.

ARQUES

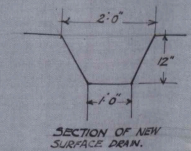
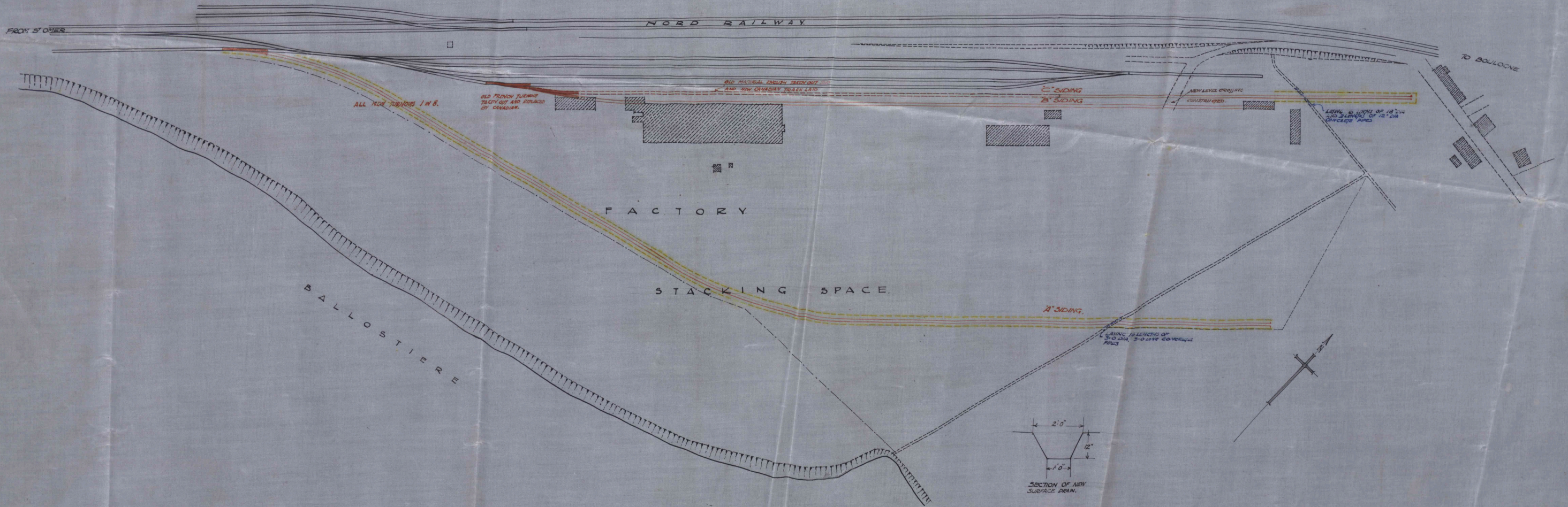
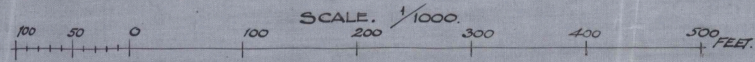
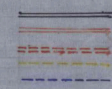
DRAWING N^o
DATE

MAP REFERENCE

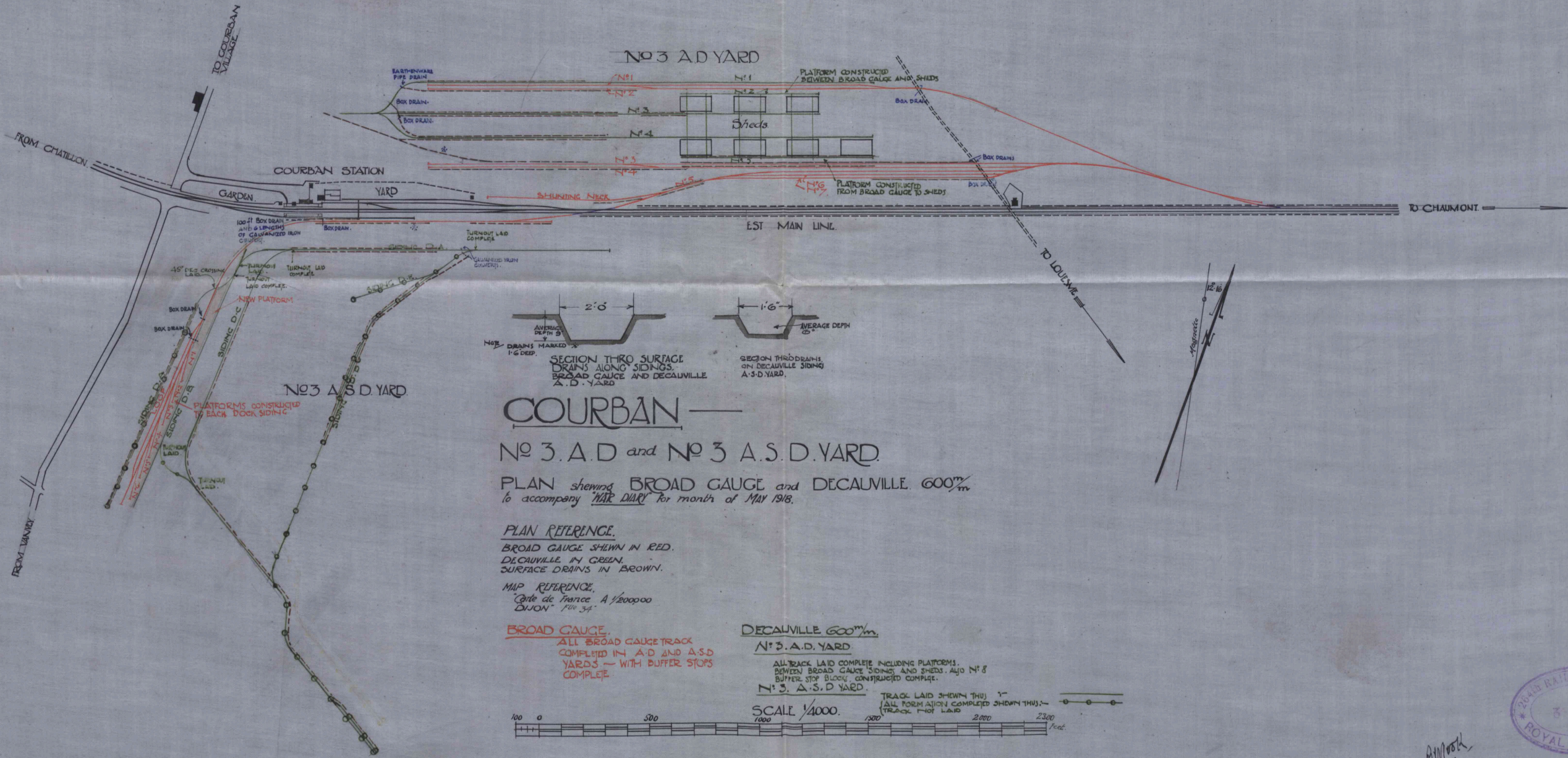
CEMENT WORKS — NEW SIDINGS.

PLAN REFERENCE

EXISTING RAILWAY SHOWN THUS
NEW TRACK LAID BY BRITISH
OLD TRACK TAKEN UP AND RELAI D BY BRITISH.
SURFACE DRAINAGE SHOWN THUS
NEW CONCRETE CULVERTS



CAP. R.E.
O.C. 26th RY O.R.E.



COURBAN
No 3. A. D and No 3 A. S. D. YARD.

PLAN showing BROAD GAUGE and DECAUVILLE. 600^m
 to accompany "WAR DIARY" for month of MAY 1918.

PLAN REFERENCE.
 BROAD GAUGE SHOWN IN RED.
 DECAUVILLE IN GREEN.
 SURFACE DRAINS IN BROWN.

MAP REFERENCE.
 Carte de France A 1/200000
 DIJON " 700 34"

BROAD GAUGE.
 ALL BROAD GAUGE TRACK
 COMPLETED IN A.D. AND A.S.D.
 YARDS - WITH BUFFER STOPS
 COMPLETE.

DECAUVILLE 600^m.
No 3. A. D. YARD.
 ALL TRACK LAID COMPLETE INCLUDING PLATFORMS,
 BETWEEN BROAD GAUGE SIDINGS AND SHEDS. ALSO No 3
 BUFFER STOP BLOCK, CONSTRUCTED COMPLETE.

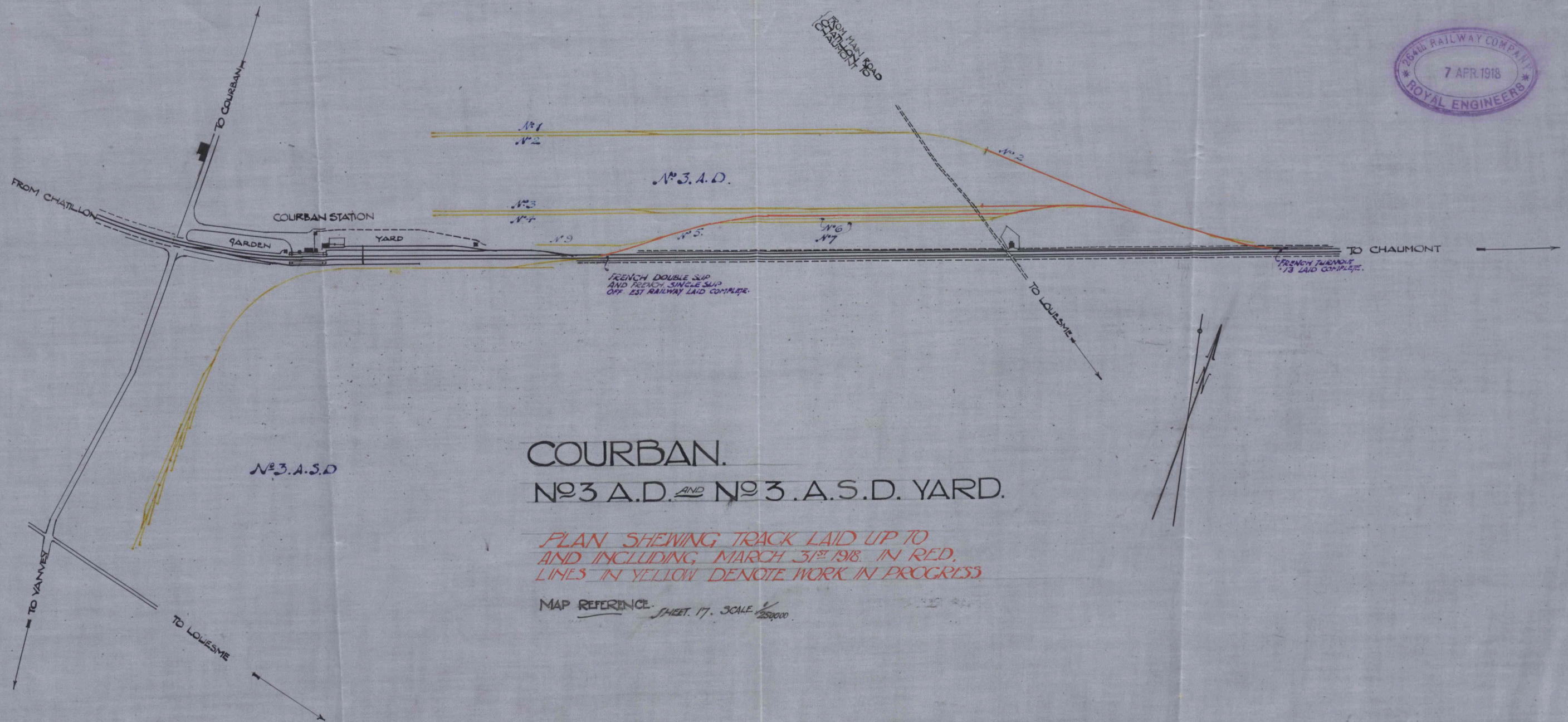
No 3. A. S. D. YARD.
 TRACK LAID SHOWN THUS: 1"
 ALL FORMATION COMPLETED SHOWN THUS: 1"
 TRACK NOT LAID

SCALE 1/4000.



CAPT. R.E.
 O.C. 264th RAILWAY Coy. R.E.

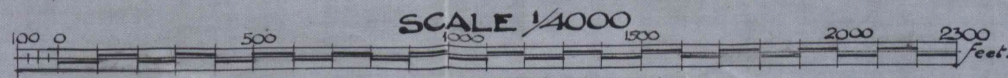
DRAWING NO. 130



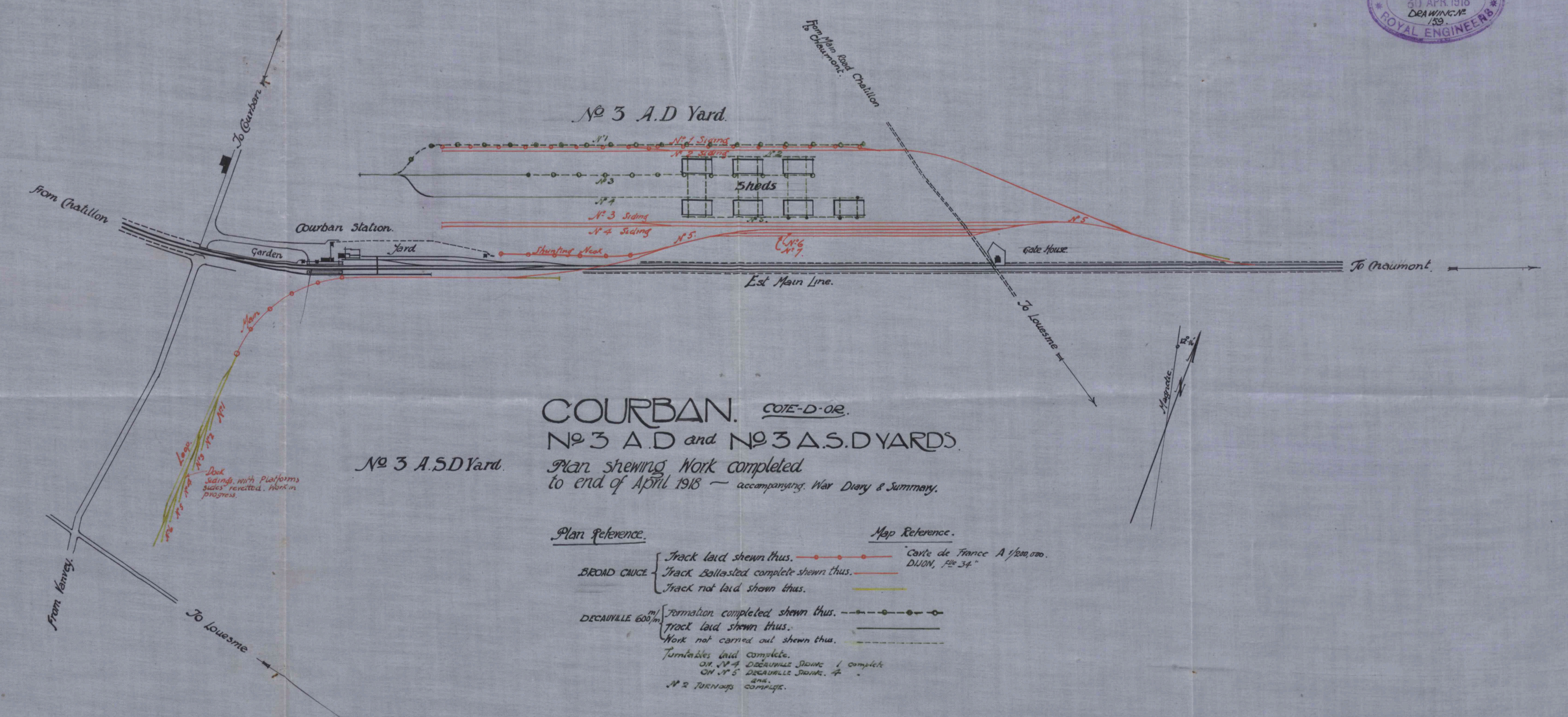
COURBAN. N^o 3 A.D. AND N^o 3 .A.S.D. YARD.

PLAN SHEWING TRACK LAID UP TO AND INCLUDING MARCH 31st 1918. IN RED, LINES IN YELLOW DENOTE WORK IN PROGRESS.

MAP REFERENCE SHEET 17. SCALE 1/25000



AWC 10/15
CAPT. R.E.
O.C. RAILWAY COMPANY. R.E.



COURBAN. CÔTE-D'OR.
No 3 A.D. and No 3 A.S.D. YARDS.
 Plan showing work completed to end of April 1918 — accompanying War Diary & Summary.

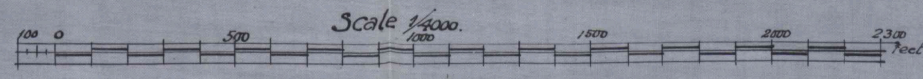
Plan Reference.

BROAD GAUGE { Track laid shown thus. ————
 Track ballasted complete shown thus. ————
 Track not laid shown thus. ————

DECAUVILLE 600m { Formation completed shown thus. ————
 Track laid shown thus. ————
 Work not carried out shown thus. ————

Turntables laid complete.
 ON No 4 DECAUVILLE STAKE 1 complete
 ON No 5 DECAUVILLE STAKE 2
 No 2 Turntable complete.

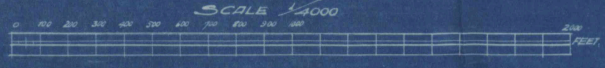
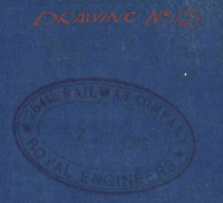
Map Reference.
 Carte de France A 1/200,000.
 DUON, feu 34.



*Do not
 sidings with platforms
 sides' reverted. Work in
 progress.*

BWoot
 Capt. M.C.R.E.
 O.C. 264th Ry. (asst) Coy. R.E.

BLARGIES NORTH NEW AMMUNITION DEPOT

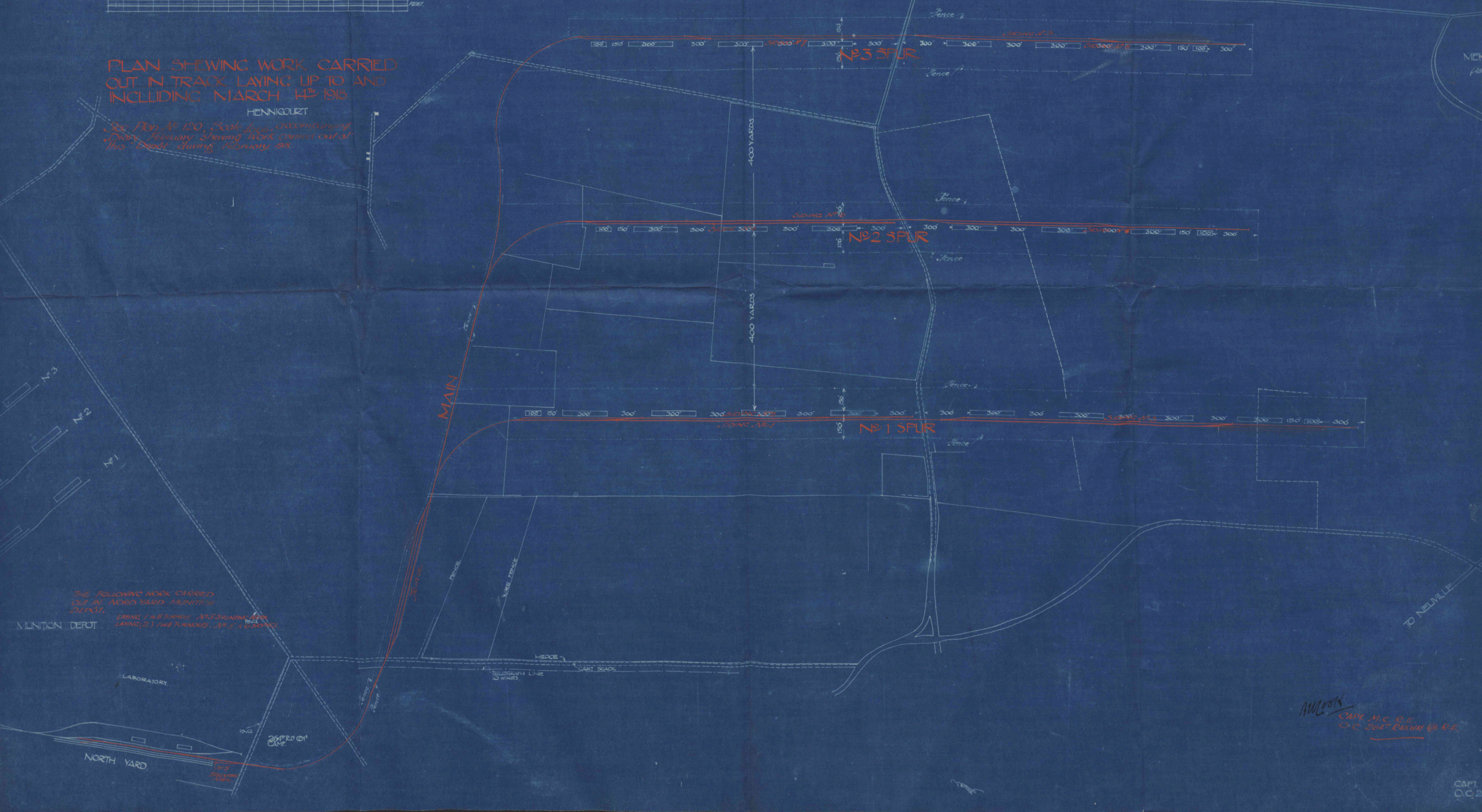


Map Reference
Sheet N.P. 10, 2nd Edition

PLAN SHOWING WORK CARRIED
OUT IN TRACE LAYING UP TO AND
INCLUDING MARCH 14th 1915

HENNICOURT

See Plan N.P. 120, 2nd Edition, for
details of Railway Station Work carried out at
this Depot during January 1915



THE FOLLOWING WORK COMPLETED
UP TO MARCH 14th 1915
LABORATORY, MUNITION DEPOT,
NORTH YARD, AND SPURS

AWLSON
CAPT. N.C.E.
O.C. 2nd Division (R.E.)

CAPT.
O.C. 2nd

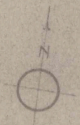
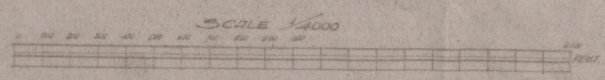
BLARGIES NORTH NEW AMMUNITION DEPOT

MAP REFERENCE
SHEET 16. 1/100,000

PLAN REFERENCE
TRACK LAID DURING MONTH SHOWN IN RED
TRACK TO BE LAID SHOWN IN YELLOW

DRAWING No. 720
DATE 28 FEB 1918

284th RAILWAY Coy. R.E.



MAINTENANCE IN YARD FROM 17 TO 15 FEBRUARY 1918

Beckett
CAPT. M.C. R.E.
O.C. 264th RAILWAY Coy. R.E.

CAPT. P. O.C. 264th